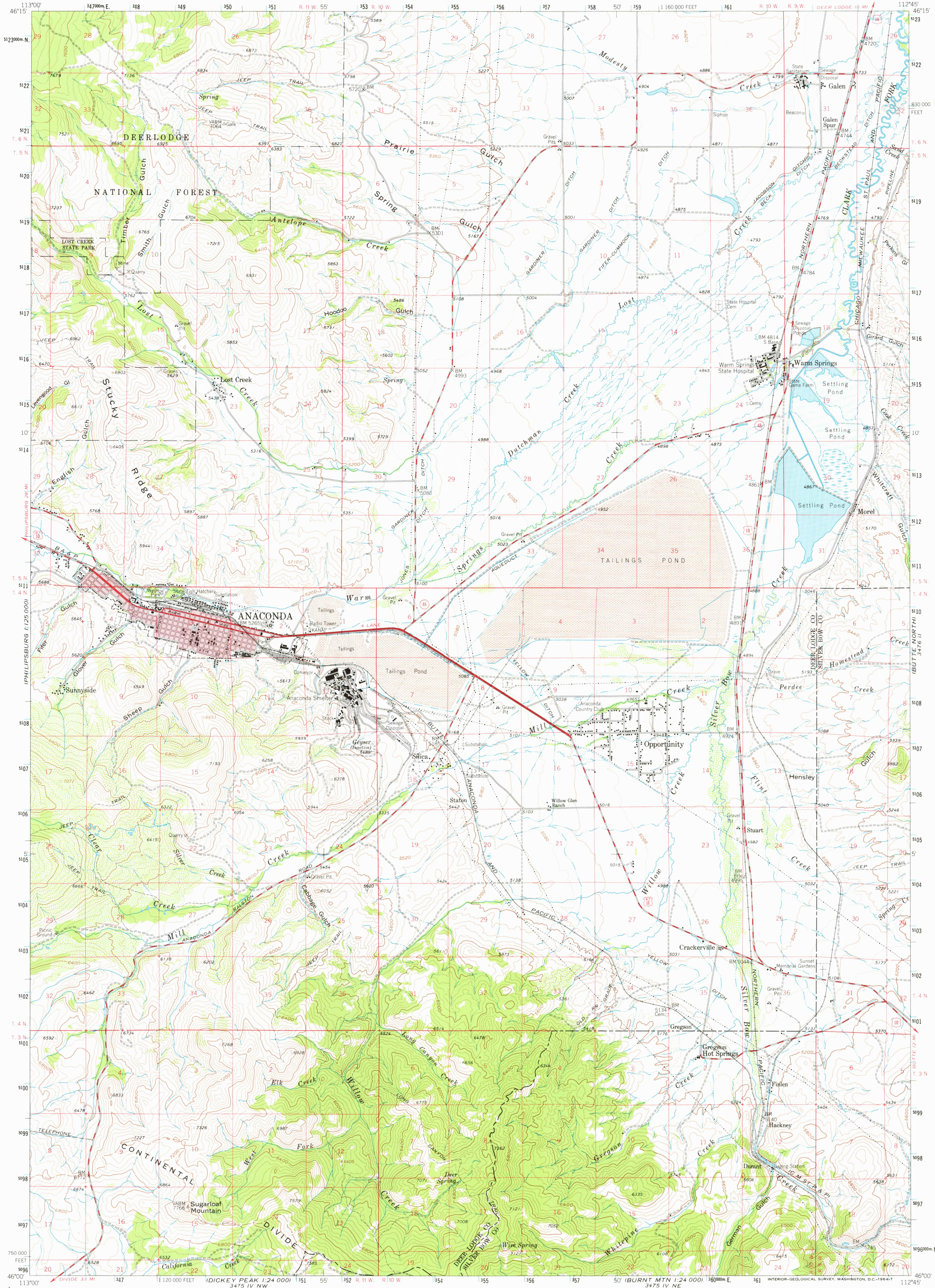


UNITED STATES
DEPARTMENT OF THE INTERIOR
GEOLOGICAL SURVEY

ANACONDA QUADRANGLE
MONTANA
15 MINUTE SERIES (TOPOGRAPHIC)



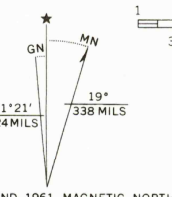
Maped, edited, and published by the Geological Survey

Control by USGS and USC&GS

Topography by photogrammetric methods from aerial photographs taken 1956. Field checked 1961

Polyconic projection. 1927 North American datum
13,000-foot grid based on Montana coordinate system, south zone
1000-meter Universal Transverse Mercator grid ticks,
zone 12, shown in blue

Red tint indicates area in which only landmark buildings is shown



SCALE 1:62,500

CONTOUR INTERVAL 80 FEET
DOTTED LINES REPRESENT 40 FOOT CONTOURS
DATUM IS MEAN SEA LEVEL

ROAD CLASSIFICATION
Heavy duty ——— Light-duty ———
Medium-duty ——— Unimproved dirt ———
U.S. Route ——— State Route ———



ANACONDA, MONT.
N4600-W11245/15
1961

AMS 3476 III - SERIES V794

THIS MAP COMPLIES WITH NATIONAL MAP ACCURACY STANDARDS
FOR SALE BY U.S. GEOLOGICAL SURVEY, DENVER 25, COLORADO OR WASHINGTON 25, D.C.
A FOLDER DESCRIBING TOPOGRAPHIC MAPS AND SYMBOLS IS AVAILABLE ON REQUEST

Map courtesy Dale Jones collection - www.railroads-of-montana.com